

ALL-NEW FORESTER TOURING



2.0i FORESTER TOURING AWD
ON THE ROAD PRICE: **£44,100**



RIVER ROCK PEARL

TECHNICAL DETAILS, ENGINE & TRANSMISSION

- Net Power: 136 PS @ 5,600 rpm
- Torque: 182 Nm @ 4,000 rpm
- 0-62 mph: 12.2 sec
- Horizontally-opposed, 4-cylinder, 4-stroke, Petrol Engine
- Lithium-Ion Traction Battery
- Engine Capacity: 1,995 cc

EXTERIOR

- 19" Dark Grey Machined Wheels Aluminium-Alloy Wheels
- LED Steering Responsive Headlights
- High Beam Assist
- LED Daytime Running Lights & Cornering Lamps
- Front LED Fog Lights & Rear Fog Lights
- Automatic Rain-Sensing Windscreen Wipers
- Power-Folding Silver Door Mirrors with Built In LED Indicators
- Sunroof - Power Sliding UV Glass
- Powered Gesture Tailgate
- Roof Rails - Low Profile Solid Matt & Gloss Black

COMFORT, CONVENIENCE, SEATING & TRIM

- Black Leather and Suede Insert Seats with Brown Stitch
- Leather-Wrapped 3-spoke Steering Wheel with Brown Stitch
- Heated Steering Wheel
- 10-Way Power Adjustable Driver's Seat (With Lumbar Support & Memory)
- 8-Way Power Adjustable Passenger's Seat
- Heated Front & Rear Seats
- 60/40 Split Flat-folding Rear Seats
- Remote Control Central Locking
- Keyless Entry & Push Button Start
- Electronic Parking Brake
- Map Lights
- Illuminated Vanity Mirrors (Driver & Front Passenger)
- Auto Dimming Rear View Mirror
- Dual Cup Holders in Centre Console
- Door Pockets with Bottle Holders (All Doors)
- 2x 12v Power sockets (1x Front row & 1x Boot space)
- Retractable and Removeable Parcel Shelf

SAFETY & SECURITY

- EyeSight v4.0 - includes:
 - Front Pre-Collision Braking System
 - Intelligent Adaptive Cruise Control
 - Autonomous Emergency Steering
 - Emergency Driving Stop System
 - Emergency Lane Keep Assist
 - Front Warning Assist
 - Intelligent Speed Limiter
 - Lane Centering Control
 - Lane Sway and Departure Warning
 - Lead Vehicle Start Alert
 - Pre-Collision Braking System
 - Pre-Collision Throttle Management
 - Traffic Sign Recognition
- SUBARU Rear Vehicle Detection (SRVD) - includes:
 - Blind Spot Monitoring
 - Lane Change Assist
 - Rear Cross Traffic Alert
 - Reverse Automatic Braking (RAB)
- Driver Monitoring System
- 360 Degree Surround View Camera
- Multiple Airbags
- Auto Dimming Rear View Mirror
- ISO-FIX Adapted Child Seat Anchors
- Occupant Detection System
- Thatcham Cat 1 Alarm System & Immobiliser
- Tyre Repair Kit

CLIMATE CONTROL

- Dual-Zone Automatic Air-Conditioning System with Anti-Dust Filter
- Windscreen Wiper De-Icer

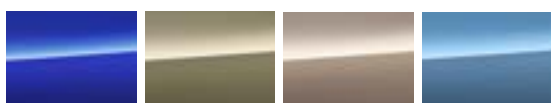
DRIVABILITY

- Permanent Symmetrical All-Wheel Drive
- SI-Drive (SUBARU Intelligent Drive)
- X-MODE (2 Modes) & Hill Descent Control
- Auto Vehicle Hold
- Vehicle Dynamics Control System (VDC)
- Paddle Shift
- tilt-Adjustable / Telescopic Steering Wheel

COLOURS



Special paint finishes (all colours except Crystal White Pearl) charged at £695.



Sapphire Blue Pearl* Autumn Green Metallic Brilliant Bronze Metallic* Horizon Blue Pearl

ENTERTAINMENT

- SUBARU 11.6-inch Infotainment System
- 6 Speakers
- Satellite Navigation
- Wireless Apple CarPlay™ & Android Auto™
- DAB Radio
- Apple CarPlay™ & Android Auto™
- DAB Radio
- Voice Recognition System
- Bluetooth®
- Wireless Charger
- Illuminated Front Row Dual USB-A & USC-C Ports with Auxiliary Audio Input Jack
- Illuminated Second Row Dual USB-A & USC-C Ports

*Special factory order. Lead time may vary. For more information speak to your local Subaru retailer.

†The SUBARU Forester e-BOXER is covered by a 3 Year/60,000 miles (whichever is sooner) Manufacturer's Warranty (bumper to bumper).

*The Lithium-ion Traction Battery is covered by an 8 Year/100,000 miles (whichever is sooner) Warranty. Bodywork is covered by a 12 year Anti-Corrosion Warranty and paintwork is covered by a 3 Year/60,000 miles (whichever is sooner) Warranty. Added reassurance is provided by a comprehensive 3 Year Recovery and Assistance package valid in the UK and Europe. For general terms and conditions visit SUBARU.co.uk.

3 YEAR
OR 60,000 MILES
WARRANTY*

8 YEAR
ELECTRIC BATTERY
WARRANTY*